

# Keyboard function

Short keystroke (1 sec.) - Long keystroke (3 sec.)

	Short keystroke		Switch on device
	Long keystroke		Switch off device
	Short keystroke	in the measuring mode	Backlight on/off
	Long keystroke	in the off mode	Open settings
	Short keystroke	in the calibration mode	Cancelling the calibration
	Short keystroke	in the measuring mode	Change of measuring parameters or unit
	Short keystroke	In setting	<ul style="list-style-type: none"> <li>Navigation through settings (P1-P7)</li> <li>Change setting</li> </ul>
	Short keystroke	in the measuring mode	Start calibration
	Short keystroke	in the calibration mode	Calibration
	Short keystroke	In setting	Selection or confirmation of a setting
	Short keystroke	at "Auto-HOLD"	Cancel "HOLD" function
	Short keystroke		

# Settings

In off mode, press for 3 seconds: Opening Settings.



Navigate

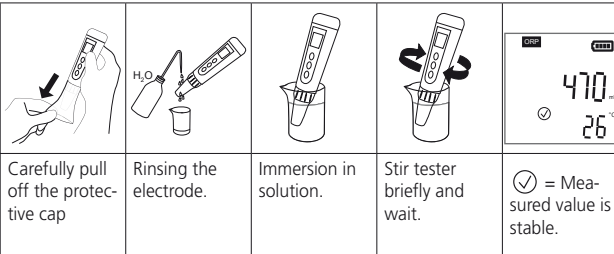
Blue marked = factory setting



Confirm

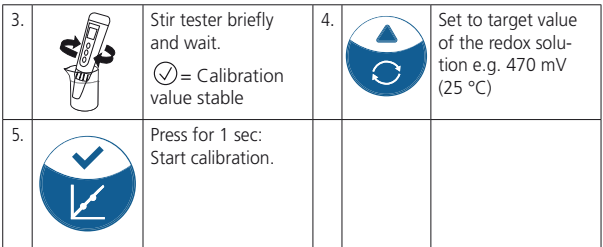
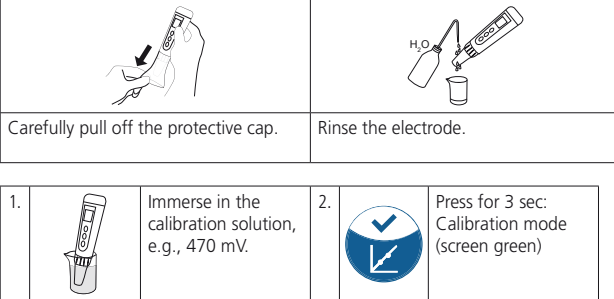
	Parameter	Selection	Meaning
P1	Min. limit value alarm	- 1000 - 1000 mV	Min. limit value undershot: Screen red
P2	Max. Alarm limit value	- 1000 - 1000 mV	Max. Limit value exceeded: Screen red
P3	Auto-Hold	a) On b) <b>Off</b>	when: Measured value min. 10 s stable Auto-Hold switched off
P4	Backlight	a) On b) <b>1 min</b> c) Off	Switched on continuously Switched on for 1 minute Continuously switched off
P5	Temperature unit	a) <b>°C</b> b) °F	Display in °C Display in °F
P6	Factory calibration	a) Yes b) <b>No</b>	Calibration is reset

# ORP measurement



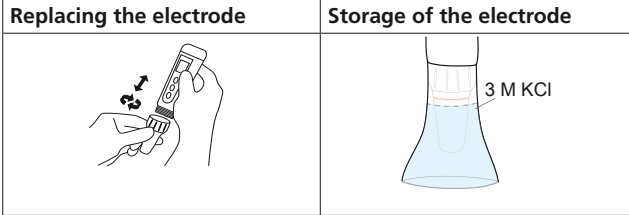
**Note:** Press at "Hold" for new measurement recording.

# ORP Calibration

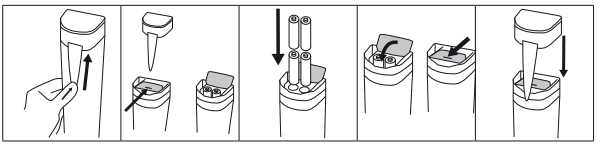


**Note:** Any ORP calibration solution can be used. SD 20 ORP/T Specifications

Redox potential (mV)	Measuring range: - 1000 -1000; resolution: 1; accuracy: ±0,2% F.S.
Temperature (°C)	Measuring range: 0-50; resolution: 0.1; accuracy: ±0.5
Background light	<b>Blue:</b> Measurement; <b>Green:</b> Calibration; <b>Red:</b> Alarm
<b>HOLD</b>	Measured value is frozen
	Flashing, battery change is required
Auto. switch off	after 8 minutes without operation
Housing protection type	IP67
Batteries	4 x AAA Batteries



# Exchange batteries



**Caution:** Insert all batteries with the positive terminal facing up. Incorrect insertion of the batteries could result in damage to the meter.

**Note:** Make sure that the battery cover is completely closed to ensure water tightness.

# Error messages and procedure

Err	Reason	Procedure
Err 2	-Key pressed too early	Wait for  then press .
<b>Measurement inaccuracies/slow response time</b>	Contamination by inorganic substances	Immerse the electrode in 0.1 mol/L HCl solution (30 min.) Rinse the electrode with deionised Water Immerse the electrode in 3 M KCl solution (30 min.)
	Contamination by organic substances/fats	Cleaning the electrode with detergent Rinse the electrode with deionised Water Immerse the electrode in 3 M KCl solution (6 h)

# Accessories

Art.-No.	Description
195070	Calibration solution redox 470 mV (25 °C), 100 ml
726404	Storage solution for pH/ORP (3 M KCl), 100 ml
726402	Storage solution for pH/ORP (3 M KCl), 25 ml
720025	SD20 ORP/T spare electrode
1950026	AAA batteries, set of 4
384801	Measuring beaker 100 ml
457022	Deionised water for rinsing

# Warranty

The warranty period for the SD20 is 2 years from the date of purchase and 6 months for the electrode. Excluded from the warranty are damages caused by improper handling or mechanical damage.

Complete instructions with accessories list can be found at [www.lovi-bond.com](http://www.lovi-bond.com) (Download Centre).